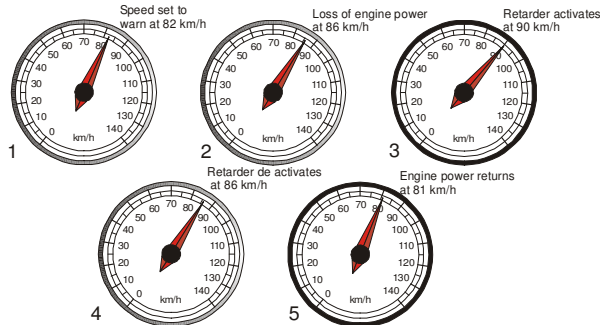


OPERATION CONTINUED...

Speed Limiter-Advanced Application:

The system behaves in the same way except if the speed is increased a further 5% beyond the pre-set limit, the retarder is activated causing the vehicle to decelerate. This system is recommended to prevent free-wheeling down hills.

Example:



Rev Limiter:

Engine speed, or revs, behave in the same way. If the revs are set to say, 3000r/min, then the warning sounds at 2850 r/min and power loss occurs at 3000 r/min. Power is re-instated again at 2850 r/min.

Do not set the rev switch point below the manufacture's injector pump governed speed as this could have a detrimental effect on correct gear selection and lead to labouring of the engine.

Idle Limiter:

This governor is a function of speed. If the vehicle is moving, the idle timer is disabled. If the vehicle is stationary, the 5 minute timer is enabled. Thus, after 5 minutes of stationary time, the engine will shut down. It does not accumulate time. If the vehicle is stationary for say, 3 minutes, as soon as movement is detected, all accrued time is cancelled and the timer will again start from zero as soon as the vehicle stops moving. After 4.5 minutes of stationary time the buzzer sounds intermittently to warn the driver that the engine will shut down within 30 seconds. Should the engine shut down, an immediate restart is possible.

A facility exists where vehicles which operate a PTO while stationary can automatically by-pass the Idle Limiter function. When the PTO is disengaged, the Idle timer becomes active

APPLICATIONS

The dual outputs offer a variety of shutdown methods:-

1. Standard fuel solenoid shutdown (single output)
2. Standard relay shutdown (single output)
3. Staged shutdown - pneumatic throttle collapse to idle, then fuel solenoid shutdown when stationary (dual output)
4. Staged shutdown - pneumatic throttle collapse to idle, then relay shutdown when stationary (dual output)
5. Speed control - Retarder activation at set speed, fuel solenoid shutdown
6. Speed control - Retarder activation at set speed, relay shutdown

SPECIFICATIONS

Control Module : Epoxy encapsulated
 Size : 100x70x20 mm
 Mounting : 2 slots. 90mm centres
 Pre-warning time : 10 seconds
 Voltage : 12 or 24v DC
 Fuse capacity : 5 amps max.
 No. of circuits : 6
 No. of outputs : 2
 Output capacity : 2 amps each
 Connections : Positive location and snap lock multipin plugs

Display Unit : 7 x LED's
 Size : 63.5x33x6mm
 Harness length : 800mm
 Face Plate : Anodised aluminium

Pressure switch : Contacts normally open
 Switch point : From 40-70 kPa
 Thread size : 1/8"-27NPT

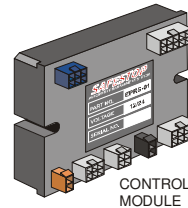
Temp switch : Contacts normally closed
 Switch point : From 100-125 deg.C
 Thread size : M14x1.5

Water level probe : Conductive
 Surge delay : 6 seconds
 Thread size : 1/8"-27NPT

Idle, Revs & Speed Limiter

Pre-warning idle : 30 seconds
 Total idle time : 5 minutes
 Speed pre-warn : 5% below power loss
 Revs pre-warn : 5% below power loss
 Retarder contact : 5% above power loss
 Adjustability : 40-150 km/h
 1000-4500 r/min
 Adjustment : Coded calibrator

Buzzer : High frequency Piezo
 Size : 50 mm dia.



Agent: